

RES•ViZ Intelligent Inflow Tracer Software

Simple and efficient solution to update reservoir models

What It Does

RES•ViZ is RESMAN's reservoir plugin developed on the Schlumberger Ocean* platform.

It enables Petrel* users to easily import RESMAN intelligent tracer interpretation results into static and dynamic reservoir models.

Benefits

- Saves Petroleum Engineers time to prepare and load multiple RESMAN interpretations into their reservoir models.
- Enables easy visualization and correlation of RESMAN intelligent tracer data with other subsurface data and interpretations.
- Supports more frequent model updating and history matching workflows to improve reservoir management and reduce uncertainty.

How It Works

RESMAN provides operators with LAS-formatted files for every data interpretation campaign performed. These LAS files can be easily imported into a Petrel model for reservoir modeling and analysis.

Additionally, past RESMAN interpretation data sets can be converted over time into the required LAS formats to update an existing reservoir model with the monitored zones, the intelligent tracer sensor locations, and the back-allocated information. This information can be displayed in the 3D viewer (Fig. 1) or the Well Function window (Fig. 2).

Furthermore, operators can manage multiple quantification interpretations performed in the same well by using the 'time player' feature in RES•ViZ to animate inflow changes over time.

This feature enables simultaneous animations with ECLIPSE*, FrontSim* or INTERSECT* reservoir simulators, permitting visual comparisons for history matching of each RESMAN intelligent tracer campaign performed by RESMAN.

Fig. 1 – Snapshot of a RES•ViZ 3D Viewer window showing four zones of a horizontal well monitored with RESMAN Intelligent Tracers (locations in yellow, purple, blue and red).

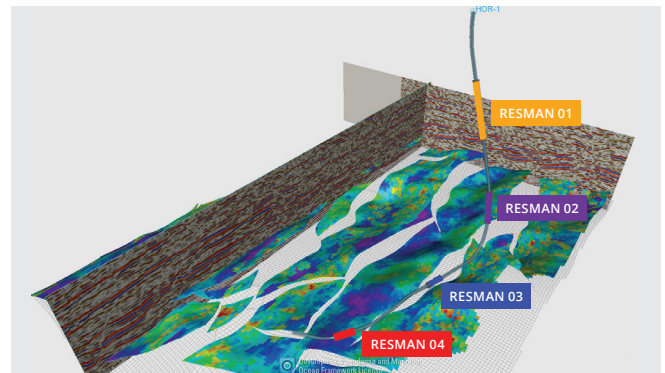
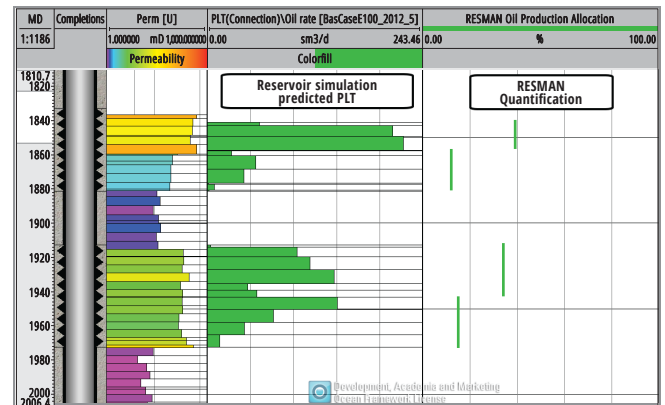


Fig. 2 – Snapshot of a RES•ViZ Well Function window with simulated PLT (green horizontal bars) Vs. RESMAN Chemical PLT interpretation (green vertical lines).



Get Started!

Obtain your copy of RESVIZ at: <https://www.ocean.slb.com>. You will require Petrel 2016 and any of the Schlumberger reservoir simulators installed in your PC to start importing your RESMAN interpretations into static and dynamic reservoir models.

* Ocean, Petrel, ECLIPSE, FrontSim and INTERSECT are marks of Schlumberger
Intelligent Tracer and Chemical PLT are marks of RESMAN

DON'T JUST MANAGE YOUR WELL. RESMANAGE IT.

HQ +47 916 71 333 • Norway/EU +47 917 36 519 • UK/Africa +44 7717 34 61 56 • Russia/CIS +7 916 083 1548
M. East +971 56 115 4107 • L. America +55 32 98416 1115 • N. America +1 713 550 7216
info@resman.no • www.resman.no

RESMAN[®]
WIRELESS RESERVOIR SURVEILLANCE